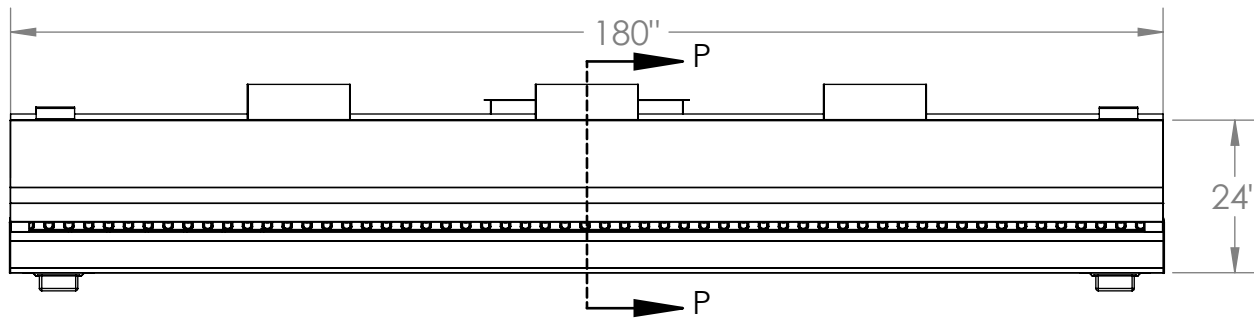


VSSD48-15

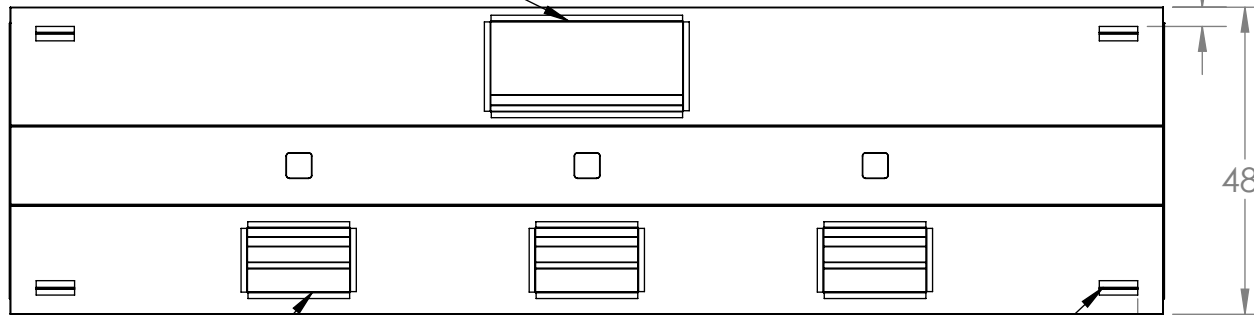
STAINLESS STEEL EXHAUST HOOD N.S.F. LISTED. CONFORMS TO NFPA96

Hood Constructed with continuous liquid-tight weld in conformance to IMC 2012 507.7.1.

Hood material: 18 Gauge 430 STAINLESS STEEL (#3 polish) where exposed.

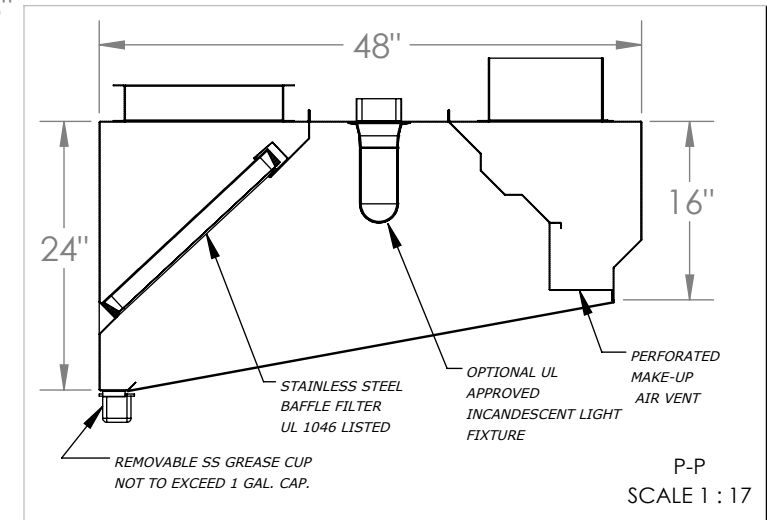


Optional Exhaust Collar 14"x30"



3x Optional Supply Collar 10"x16"

MOUNTING BRACKET (TYP. OF 6)



P-P
SCALE 1 : 17

MODEL INFORMATION

TYPE	DIMENSIONS			CFM SPECS		WEIGHT
	LENGTH	WIDTH	HEIGHT	EXHAUST PLENUM	SUPPLY PLENUM	
1	180"	48"	24"	4532 @ 0.5 ESP	3626 @ 0.12 ESP	422 lbs

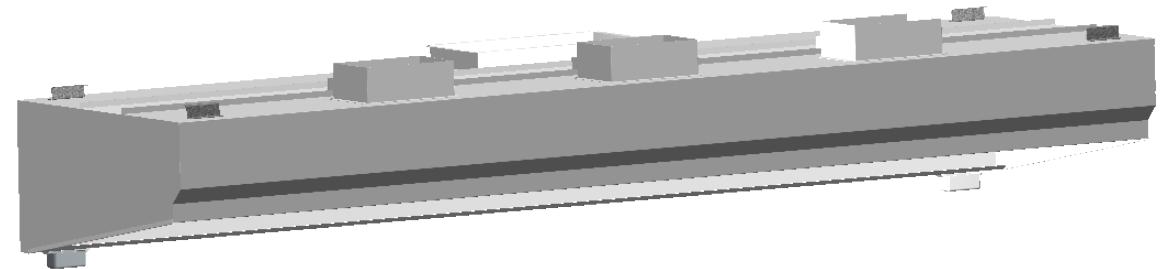
OBS.: Installing contractor have the responsibility to ensure hood clearance from limited-combustible and combustible materials is compliant with local code requirements.

STANDARD COMPONENTS

MOUNTING BRACKET 12-GAUGE GALVANIZED	Grease Drain	Grease Cup Stainless Steel NSF	Grease Filter Stainless Steel UL 1046		
QTY	QTY	QTY	QTY	Length	Height
6	2	2	0	16"	20"
			4	20"	20"
			4	25"	20"

SUGGESTED COMPONENTS

Exhaust Collar	Supply Collar (Built-in Fire Damper)	Standoff	Incandescent Light Fixture	Shipping Crate	
				Dimensions (in) and Weight (lb)	
16-Gauge Cold Rolled Build	16-Gauge Cold Rolled Build	<input type="checkbox"/> NONE <input type="checkbox"/> 3" <input type="checkbox"/> _____	UL Listed (Included Component)	Length:	184"
QTY	Size			QTY	Size
1	14" x 30"	3	10" x 16"	Height:	32"
				Weight:	572 lbs



PO BOX 47607 - ATLANTA, GA 30360
PHONE: 770.936.0770 - www.superiorhoods.com

PROJECT		VSSD48-15			
TITLE		VSSD HOOD MODEL STANDARD SPEC SHEET			
APPROVED	SIZE B	CODE	DWG NO		REV 01
CHECKED					
DRAWN	PRODUCTION	2023	SCALE: 1:30	WEIGHT: 422 lbs	SHEET: 1/1