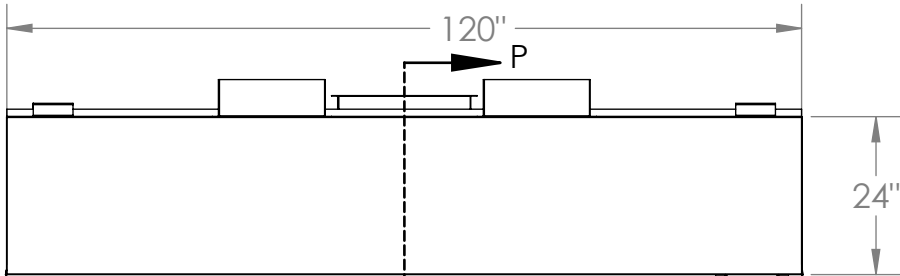


# BSSM48-10

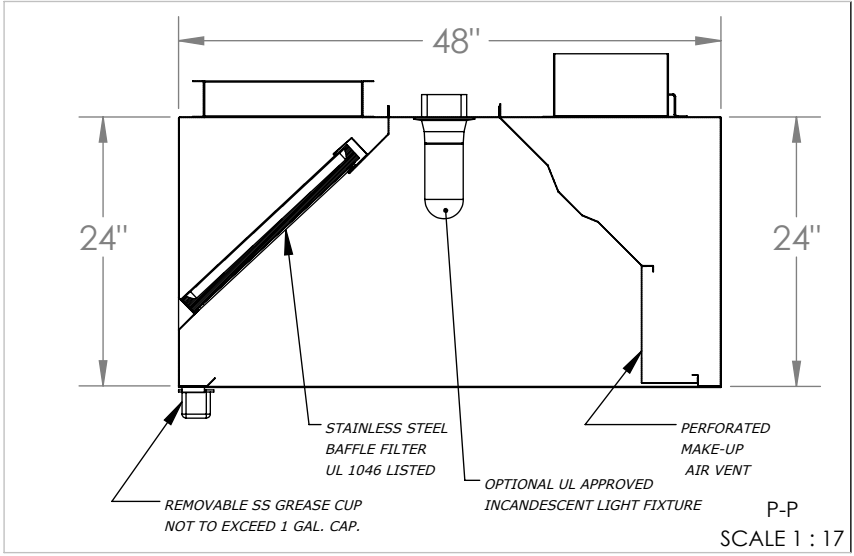
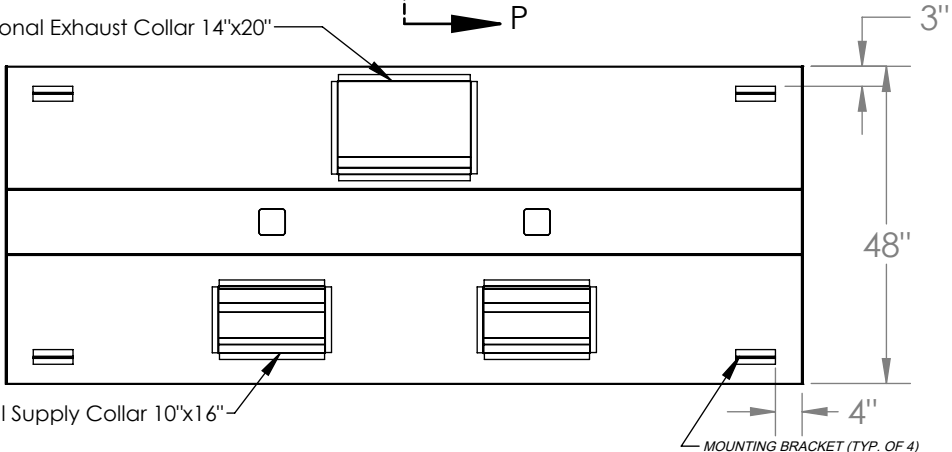
## STAINLESS STEEL EXHAUST HOOD N.S.F. LISTED. CONFORMS TO NFPA96

Hood Constructed with continuous liquid-tight weld in conformance to IMC 2012 507.7.1.

Hood material: 18 Gauge 430 STAINLESS STEEL (#3 polish) where exposed.



Optional Exhaust Collar 14"x20"



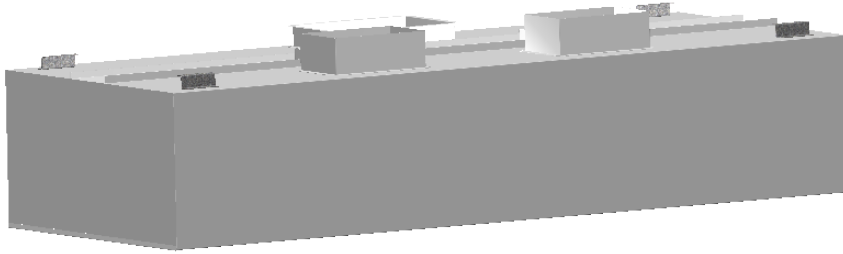
SCALE 1 : 17


MODEL INFORMATION						
TYPE	DIMENSIONS			CFM SPECS		WEIGHT
	LENGTH	WIDTH	HEIGHT	EXHAUST PLENUM	SUPPLY PLENUM	
1	120"	48"	24"	3021 @ 0.5 ESP	2417 @ 0.12 ESP	326 lbs

OBS.: Installing contractor have the responsibility to ensure hood clearance from limited-combustible and combustible materials is compliant with local code requirements.

STANDARD COMPONENTS					
MOUNTING BRACKET 12-GAUGE GALVANIZED	Grease Drain	Grease Cup Stainless Steel NSF	Grease Filter Stainless Steel UL 1046		
QTY	QTY	QTY	QTY	Length	Height
4	1	1	0	16"	20"
			1	20"	20"
			4	25"	20"

SUGGESTED COMPONENTS							
Exhaust Collar		Supply Collar (Built-in Fire Damper)		Standoff	Incandescent Light Fixture	Shipping Crate	
16-Gauge Cold Rolled Build		16-Gauge Cold Rolled Build				Dimensions (in) and Weight (lb)	
QTY	Size	QTY	Size	<input type="checkbox"/> NONE <input type="checkbox"/> 3" <input type="checkbox"/> _____	UL Listed (Included Component)	Length:	124"
						Width:	52"
					QTY	Height:	32"
1	14" x 20"	2	10" x 16"		2	Weight:	426 lbs



 PO BOX 47607 - ATLANTA, GA 30360 PHONE: 770.936.0770 - www.superiorhoods.com	PROJECT <b>BSSM48-10</b>			
	TITLE <b>BSSM HOOD MODEL STANDARD SPEC SHEET</b>			
APPROVED	SIZE B	CODE	DWG NO	REV 01
CHECKED				
DRAWN	PRODUCTION	2023	SCALE: 1:29	WEIGHT: 326 lbs
				SHEET: 1/1